

## Book para Prova de Trompete Concurso UFBA

1. J.S. Bach – Cantata 147, Coro No. 1 (compasso 1 ao 9) Edição IMSLP
2. J.S. Bach – Suite Orquestral No. 3, Giga (compasso 1 ao 23) Edição IMSLP
3. L. Beethoven – Abertura Leonore No. 3 ( Fanfarra) Edição IMSLP
4. L. Beethoven – Sinfonia 9, Presto (compasso 1 com anacruz ao 7) e Allegro Assai (Letra B até compasso 15 depois de C) Edição IMSLP
5. R. Schumann – Sinfonia 2, Movimento 1 (Compasso 1 ao 22) Edição IMSLP
6. R. Wagner – Prelúdio da Ópera Parsifal (Compassos 9 ao 14 e 28 ao 33) Edição IMSLP
7. I. Strawinsky – Suíte Pulcinella ( Tocatta e Finale) procurar material
8. J. Ibert – Scales (procurar material)
9. G. Donizetti – Don Pasquale, Ato 2, Prelúdio, Cena e Aria, N. 5 (Compassos 5 ao 30) Edição IMSLP
10. R. Strauss – Le Bourgeois Gentilhomme (compasso 5 ao 20) Edição IMSLP
11. G. Gershwin – Concerto para Piano em Fá, Segundo movimento (compasso 5 ao 19) Edição IMSLP
12. G. Mahler – Blumine da Sinfonia no. 1 (Compasso 5 com anacruz ao 24)
13. P. Tchaikovsky – O Quebra Nozes, Ato 2, No. 12 "Le Chocolat" Divertissement (compasso 5 ao 19)

# Kantate Nr. 147

„Herz und Mund und Tat und Leben“  
am Feste Mariä Heimsuchung

Trompete in C

PRIMA PARTE

Joh. Seb. Bach (BWV 147)

CHOR

4

6 *p* *pp* *f*

8 7

Johann Sebastian Bach  
Orchestral Suite No. 3  
In D Major, BWV1068

Tromba I

Gigue

in D

3

7 VI. I

Ludwig van Beethoven  
Leonore Overture No. 3, Op. 72

**TRUMPET I in B $\flat$**

The image displays a musical score for Trumpet I in B-flat, consisting of four staves of music. The first staff begins with a treble clef, a key signature of two sharps (D major), and a dynamic marking of *ff*. A blue bracket highlights a section of the staff, with a '4' above it and the word 'Solo' to its right. The second staff features a treble clef, a key signature of two sharps, and a tempo marking of 'Tempo I' with the number '16' below it. The third staff starts with a treble clef, a key signature of two sharps, and a 'Solo' marking above the first measure. The fourth staff begins with a treble clef, a key signature of two sharps, and a tempo marking of 'Tempo I' with the number '70' below it. A blue bracket highlights the beginning of this staff. The dynamic marking *p cresc.* is placed below the staff, and *ff* appears at the end of the staff. The music is written in a standard notation style with various note values, rests, and articulation marks.

# Ludwig van Beethoven

## Symphony No. 9 in D Minor, Op. 125

TROMBA I  
in D.

The musical score for Tromba I in D minor, Op. 125, consists of five staves. The first staff is marked "in D. Presto.  $\text{♩} = 96$ " and begins with a fortissimo (*ff*) dynamic. It features a series of eighth notes and rests, with dynamics ranging from *f* to *pp*. A blue bracket highlights a section of the first staff. The second staff is marked "Allego assai.  $\text{♩} = 80$ " and begins with a fortissimo (*f*) dynamic. It features a series of eighth notes and rests, with dynamics ranging from *f* to *ff*. A blue bracket highlights the beginning of the second staff. The third, fourth, and fifth staves continue the musical line, with dynamics ranging from *sf* to *f*. The fifth staff is marked "poco Adagio. Tempo I." and begins with a fortissimo (*f*) dynamic. It features a series of eighth notes and rests, with dynamics ranging from *sf* to *f*. A blue bracket highlights a section of the fifth staff. The score concludes with the marking "Recit."

Robert Schumann  
Symphony No. 2 in C Major, Op. 61

1

Trumpet I

in C. (Original Notation)

Sostenuto assai. ♩ = 76.

Solo.

The first staff of music is in 6/4 time and begins with a piano (*pp*) dynamic. It features a melodic line with various note values and rests, including a first ending bracket over the final measure.

The second staff continues the melodic line. It includes a first ending bracket over the first measure and a measure marked with a '5'. The dynamic markings *poco crescendo* and *dim.* are present.

The third staff begins with a first ending bracket over the first measure, followed by a blue bracket. The tempo marking *Un poco più vivace.* is indicated. The dynamic markings *cresc. f*, *f*, *f*, *p*, *f*, and *p* are used throughout the staff.



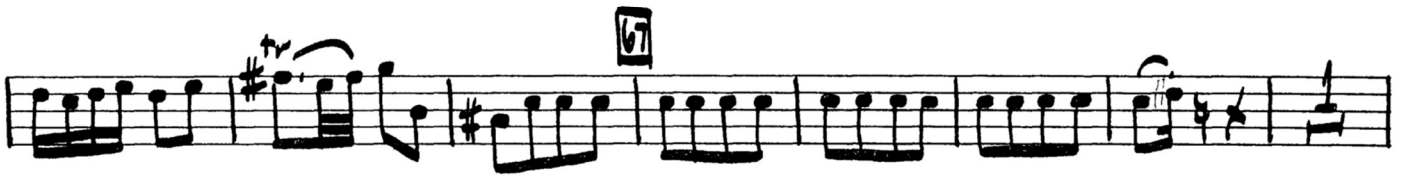


# Igor Stravinsky Pulcinella Suite

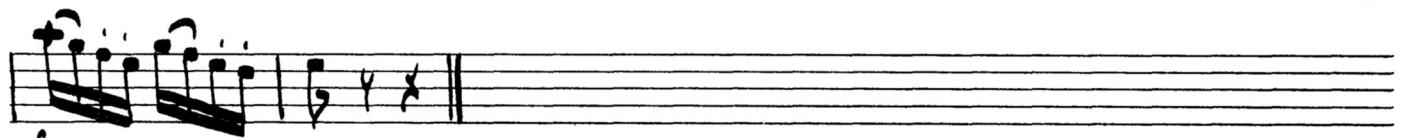
## TOCCATA

65 ALLEGRO

SOLA



*p* *piu f*



*f*



Stravinsky — Pulcinella

TRUMPET

Handwritten musical score for Trumpet in Stravinsky's Pulcinella, measures 105-118. The score is written on seven staves. Measure numbers 105 through 118 are boxed in the top line of each staff. The music is in 6/8 time and features various dynamics and articulations. A blue bracket highlights measures 115 and 116. A blue bracket also highlights the end of the piece at measure 118.

Measures and dynamics:

- 105: *f*
- 106: *f*
- 107: *sf*, *mf*, *sf*
- 108: *f*, *SOLO*, *PLAY OUT*, *SIM.*
- 109: *f*
- 110: *Poco sf*, *f*
- 111: *f*
- 112: *f*
- 113: *sf*
- 114: *f*, *sub p*
- 115: *f*
- 116: *f*
- 117: *SOLO*, *sf*
- 118: *SOLO*, *sf*, *SIM.*



TROMBA 1.<sup>a</sup> e 2.<sup>a</sup>

DON PASQUALE

G. DONIZETTI

ATTO 2<sup>o</sup>

PRELUDIO, SCENA ED ARIA

N<sup>o</sup> 5

*Cantabile*

*p Sola* 3 *p*

*rall. a tempo* *a piacere*

**RECIT.**

15 *f* *f*

a'danni miei con-giura.

# Tromba.

## № 3. Der Fechtmeister.

in B

Ziemlich lebhaft. (*animato assai*) Metr. ♩ = 72

*f* *colla parte*

*dim.* *p*

36 8 37 2 4

# Concerto in F

G. Gershwin

## Trumpet (B Flat) 1

II

Adagio 2

Andante con moto 1

Mute with felt crown

*pp*

8

*mp*

14

1 13

poco rit. 2 A tempo

1 1

*pp*



Trumpet (F)

# Blumine

G. Mahler

Andante allegretto

3

*pp*

8

1

15

2

22

3

*pppp*

*p*

